

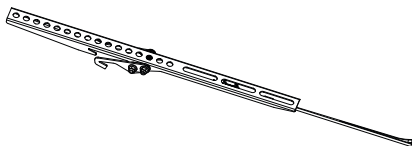
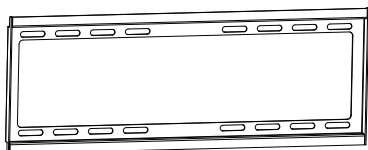
LWHT 5535

SCHWAIGER®



A (1x)

B (2x)



M-A (4x)

M-B (4x)

M-C (4x)

M-D (4x)

M-E (4x)



M4x14



M5x14



M6x14



M8x15



M8x50

M-F (4x)

M-G (4x)

W-A (4x)

W-B (4x)

W-C (4x)



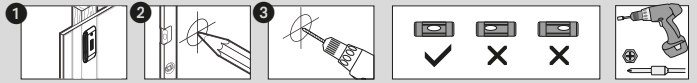
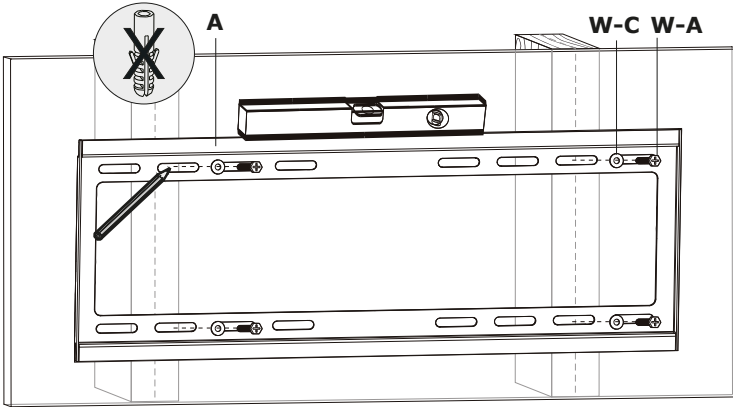
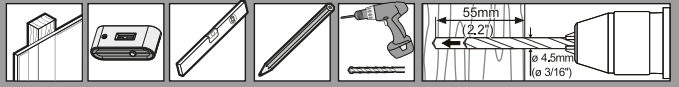
D5



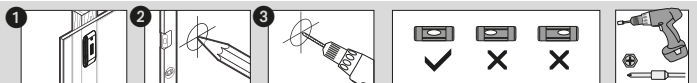
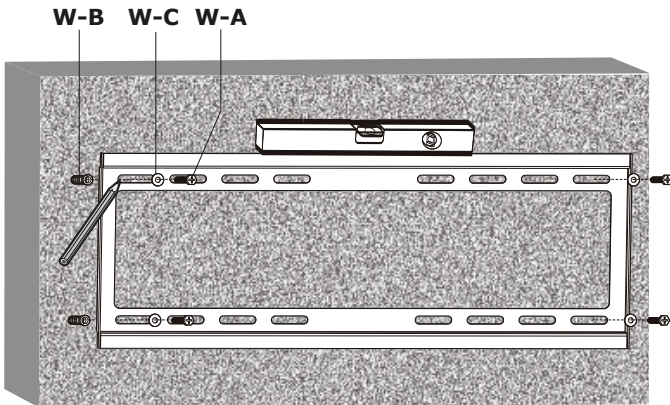
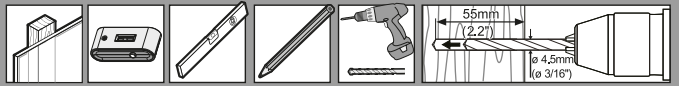
D8



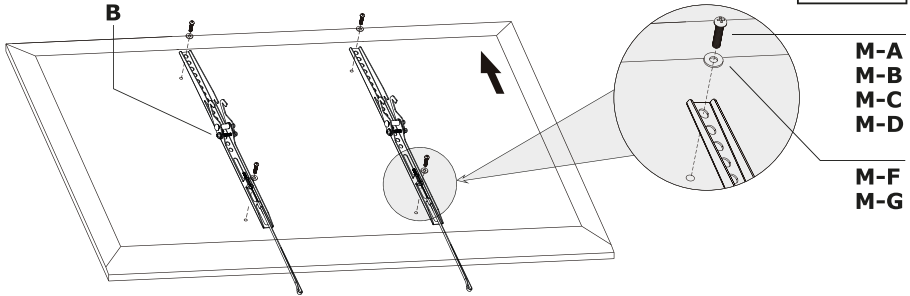
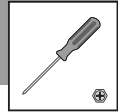
1A



1B



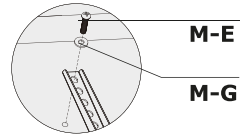
2



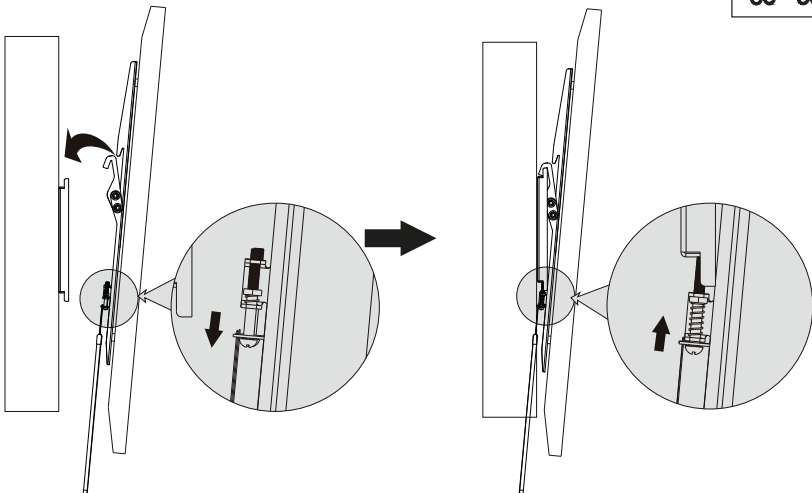
Samsung TV

Für einen Samsung TV mit tieferen Gewindebuchsen verwenden Sie bitte die Schrauben M8x50 und die Unterlegscheiben D8.

If you use a Samsung TV with deeper VESA holes, please use M8x50 screws and Samsung spacer.



3



Hotline +49 9101 702-299

SCHWAIGER[®]

Schwaiger GmbH
Würzburger Straße 17
90579 Lanzenzell

www.schwaiger.de
info@schwaiger.de